



   **social development**  
Department:  
Social Development  
REPUBLIC OF SOUTH AFRICA

   
**USAID**  
FROM THE AMERICAN PEOPLE  
SOUTH AFRICANS AND AMERICANS  
IN PARTNERSHIP TO FIGHT HIV/AIDS

**Change in Child Wellbeing: The Isibindi Model**  
NACCW  
03 September 2015

## National Association of Child Care Workers (NACCW)

- NACCW has since 2000 been implementing the Isibindi model.
- The name 'Isibindi' means 'courage' in IsiZulu.
- The model provides for employment of child and youth care workers (CYCWs) who deliver community and home-based services to at risk, orphaned and vulnerable children.



## Elements of the Isibindi Model

- Non-profit social franchise model
- Model of community-based child & youth care services
- Rural focus
- Child rights framework
- Family preservation
- Partnership model



## Isibindi Implementation

- Child & youth care workers deployed
- Child & youth care workers offer services to families
  - Home visits
  - School visits
  - Flexi scheduling
  - Lifespace work
- Referrals and Networking



## Child Wellbeing

Aspect	Enrolment Form	Monthly Activity Log
<b>Education 1: Attendance</b>	School grade – with a recorded grade converting into a Desirable indicator for school attendance	Child attended school this month – with Yes converting into a Desirable indicator for school attendance
<b>Education 2: Progression</b>	School grade: Progression not relevant at registration	Education progression – converted into Desirable indicator if the child's current grade is higher this year than the previous year.
<b>Health</b>	Child on ARVs – converted into Desirable if (a) child HIV-positive but does not need ARVs or (b) child on ARVs (Good).	Child on ARVs – converted into Desirable if (a) child HIV-positive but does not need ARVs or (c) child on ARVs
<b>Nutrition</b>	Child eats regularly – with YES converted into Desirable indicator	Child eats regularly – with YES converted into Desirable indicator.
<b>Social assistance</b>	Whether child is beneficiary of child support grant (CSG), foster child grant (FCG), care dependency grant (CDG) – with YES on any of the grants converted into Desirable indicator.	Whether child during the month received child support grant (CSG), foster child grant (FCG), care dependency grant (CDG) – with YES on any of the grants converted into Desirable indicator.
<b>Abuse</b>	Whether there is rape, other sexual abuse, other abuse identified. Responses to be converted into an Undesirable indicator if there has been any one of these forms of abuse.	Whether a child protection incident (rape, other sexual abuse, other abuse has been reported for the child in the past three months – converted into an Undesirable indicator if any abuse reported in this period.



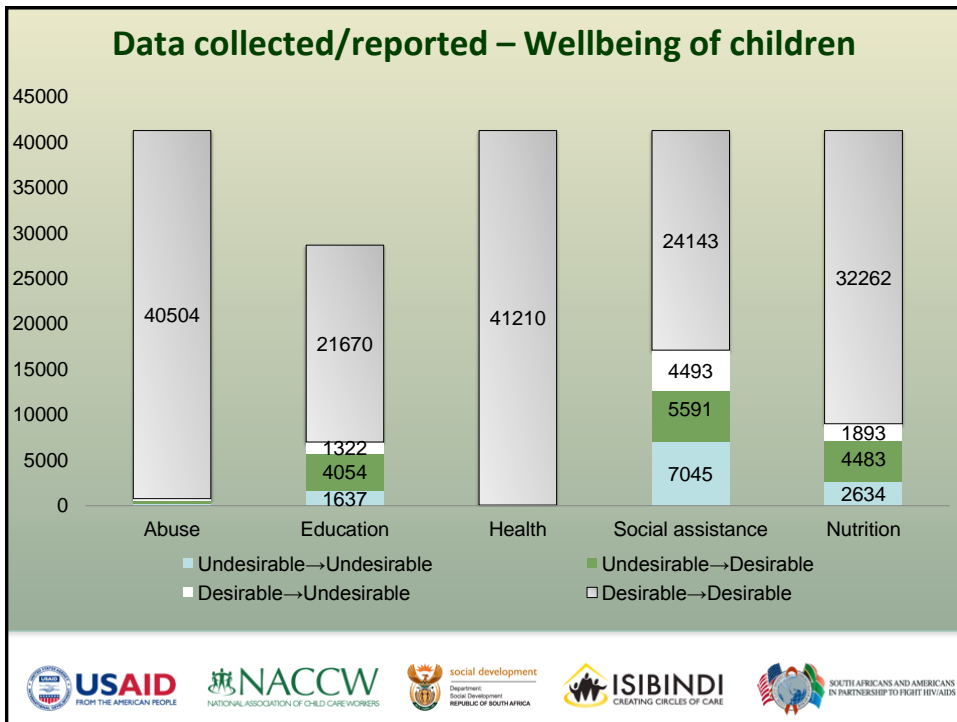
## Child Wellbeing

In respect of child well-being, for each of the five aspects the standard reports would show the number of children reached by Isibindi during the given year:

- Undesirable – Undesirable (unchanged)
- Desirable – Desirable (unchanged)
- Undesirable – Desirable
- Desirable – Undesirable







## M&E Findings – Year 1

- **78%** of all Isibindi children ate three meals a day
  - **11%** of children who were not eating three meals a day when first monitored during 2013/14, were eating well when last monitored
  
- **76%** of school-age children attended school regularly throughout the year
  - **14%** of school-age children were not attending school regularly when first monitored but were back in school when last monitored



## Grade progression

- Grade progression is known between 2013 and 2014 for 11 366 children aged 7-17 years.
- **81%** progressed to the next grade while 19% did not.
- **92%** of those who passed received educational support.



## M&E Findings Year 1

- **403** children who had suffered abuse were no longer being abused by the end of the period
- **99%** of Isibindi children's HIV status remained negative
- **58%** of Isibindi children were grant beneficiaries throughout the period
  - **14%** of children were not receiving a grant when first monitored, but subsequently received a grant
- **3 313** children or their caregivers received citizenship documentation for the first time through assistance provided by CYCWs.



## Child Wellbeing – Undesirable

Further work by Isibindi CYCWs is, however, still needed

- 17% of children started and ended the year without access to a grant
- 3 730 children did not have citizenship documentation at the end of the year
- 5% of school-age children stopped attending school regularly
- 5% of children were previously eating three times a day but were not eating well when last monitored
- 365 children were reported, at the end of the year, to be suffering from abuse
- 52 children in need of anti-retrovirals were not receiving them.



## Interventions (service exposure)

Type	Field selection
Psychosocial	<ul style="list-style-type: none"> <li>• Number of home visits</li> </ul>
Education	<ul style="list-style-type: none"> <li>• Helped child with school admission</li> <li>• Homework supervision/assistance – Yes</li> </ul>
Economic	<ul style="list-style-type: none"> <li>• SA ID received</li> <li>• Birth certificate received</li> </ul>
Health	<ul style="list-style-type: none"> <li>• Child on ARVs</li> <li>• Compliance support to the child: ARVs and/or universal precautions taught</li> </ul>
Referral	<ul style="list-style-type: none"> <li>• Child removed</li> <li>• Court case opened</li> <li>• Treatment provided</li> <li>• Other</li> </ul>



## Comparison of outcome and service exposure

- Change in abuse status compared with receipt of psychosocial and referral services.
- Change in health status compared with health services.
- Change in social assistance status compared with access to citizenship documentation.
- Change in nutrition status compared with psychosocial services.
- Comparison of school attendance and educational support.



## Example – Health and Health Services

Health Services		
Wellbeing Status	Yes	No
Undesirable→Undesirable	3	1
Undesirable→Desirable	31	0
Desirable→Undesirable	22	5
Desirable→Desirable	8 303	32 907
<b>Total children</b>	<b>8 359</b>	<b>32 913</b>





## Data Usage

- Monthly Partner Reports and data to inform special focus programmes.
  - Strengthening CYCW performance
  - Hotspots: Target high burden areas
  - Assist partners (other CBOs/NGOs)
- Routine data to tailor services in the best interest of the child.



## Thank you!

- For additional information, may contact:

[nicia@naccw.org.za](mailto:nicia@naccw.org.za)

021 762 6076

